

Zee Tags

PO Box 1228

Eagle Farm QLD 4009

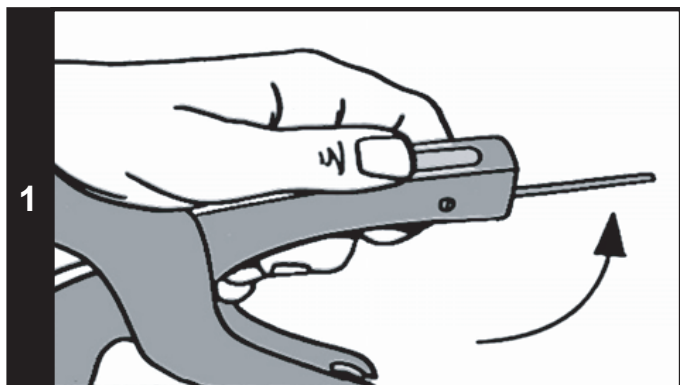
Telephone: (07) 3216 4828 • Facsimile: (07) 3216 4995

Email: info@zeetaas.com.au

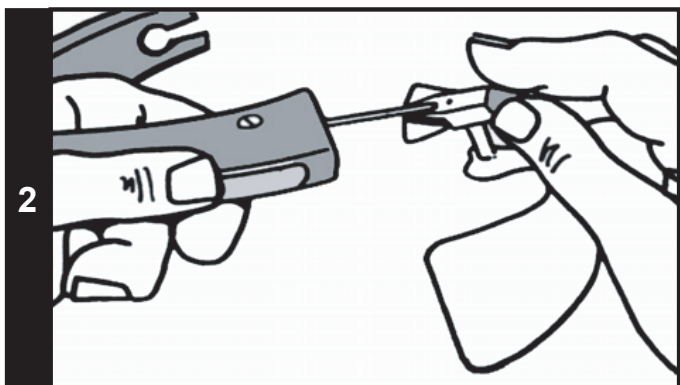


ZEE TAGS FEEDLOT

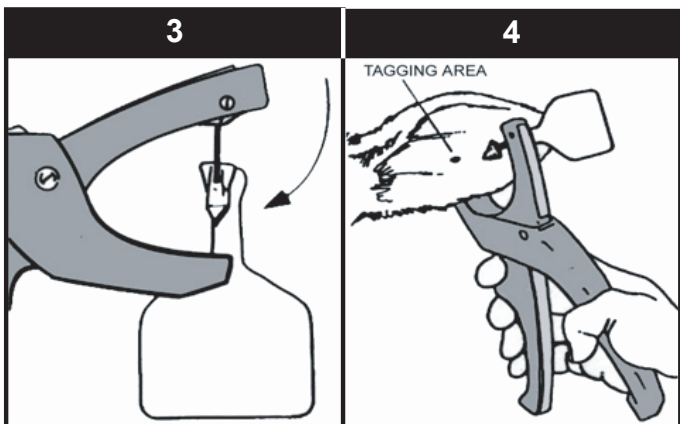
Application Instructions



1 Flip applicator pin up to tag loading position.



2 Insert the pin into the tag head.



3 Rotate tag to the side. Flip loading pin down into tagging position.

4 Tag through the front of the ear. To apply tag squeeze handles firmly together and hold closed.

DO NOT USE EXISTING TAG HOLES

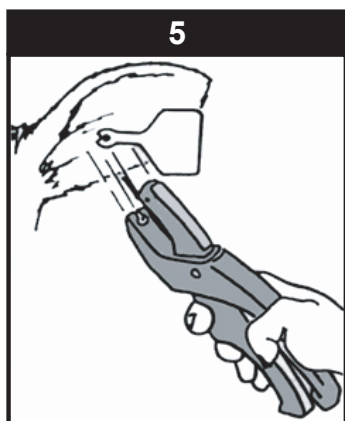
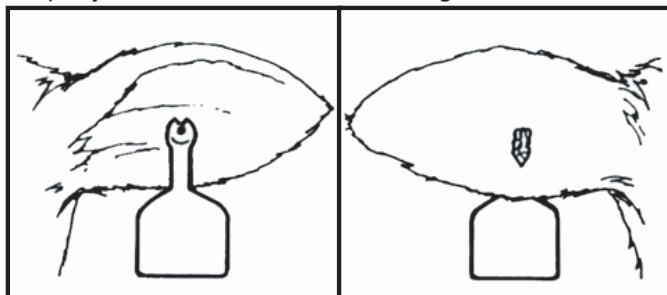
Conventional two piece ear tags damage surrounding ear tissue, making it weaker. Applying Zee Tags in these existing holes may lead to loss of tags.

5 To remove applicator, pull straight down from animal's ear in a smooth motion.

DO NOT OPEN HANDLES

When the Zee Tag Applicator is pulled away from the ear, the pin automatically flicks open. This prevents ripped ears and damage to the pin.

Properly inserted, the Feedlot Zee Tag looks like this.



HELPFUL HINTS

Need a spare pin?

- There is one in the bottom handle of the applicator.

Keep your Zee Tag Applicator running smoothly.

- Use a light lubricant or any silicone based product on the applicator pin.

Mark your own numbers to last.

- Use the Zee Tag marking pen, applying two good coats of ink for maximum penetration into the tag and longer lasting numbers.